

Snapshots

# The Aranya Life

COMPILED BY: BI STAFF; PHOTOGRAPHS: COURTESY PIRAMAL ARANYA



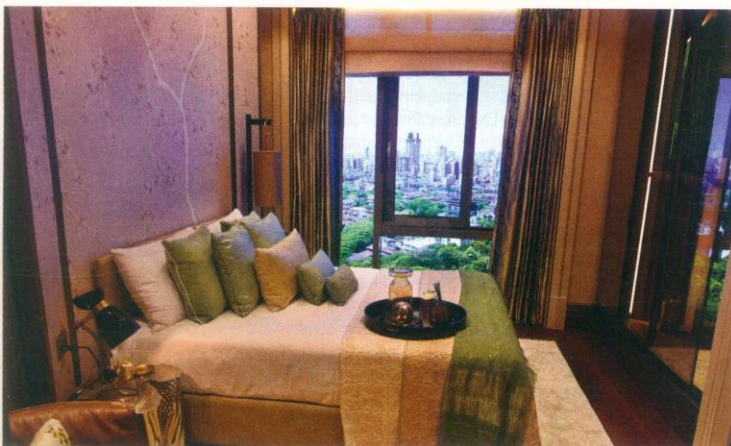
Located in Byculla, in the heart of Mumbai, Piramal Aranya is the signature development of Piramal Realty and offers a new perspective on premier living in the city. Aranya is flanked by a 60-acre botanical garden on one side and the glittering Mumbai harbour on the other. Built across seven acres, this residential project is 62-storeyed and is created by Make Architects (principal architects), Hirsch Bedner Associates (lead interior design), BuroHappold (lead structural and MEP consultants) and EDSA (lead landscape architects). A discerning customer has four layout plans to choose from: 2, 3, 3.5 & 4-BHK modules which promises to be dipped in luxurious comfort, and the showflat we feature here is a precursor for things to come. The apartments at Aranya Pavillion have been designed to accommodate multi-generational families with accessible and adaptable



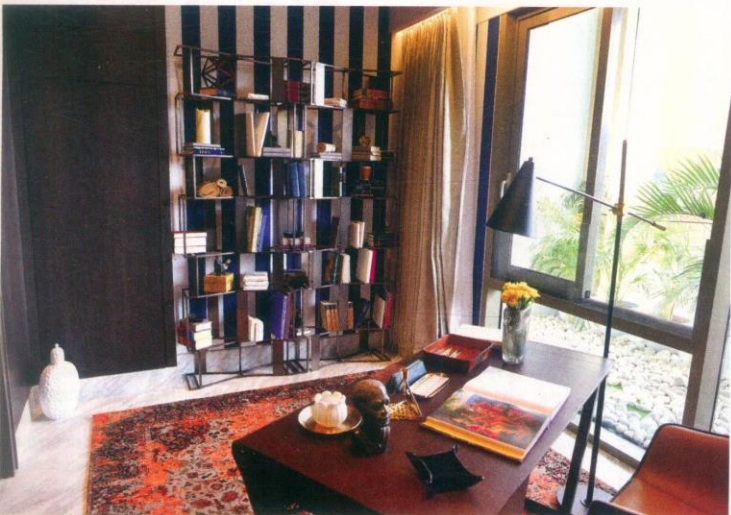


features that enhance its restrained luxury. Here, floor-to-ceiling windows frame the views. Warming woods and statement stones abound and brass detailing can be found in each room alongside plush furnishings and carefully curated contemporary Indian artwork from the Piramal Art Foundation's private collection. The front door opens onto a long corridor lined with a large painting by Jehangir Sabavala.

The living room is open-plan and contemporary. Here, a feature wall with hand-painted fabric panels depict birds high on the tree canopy. There are textured white sofas, comfortable contemporary armchairs and crafted side tables and lamps. The design intention was to create a series of semi-private spaces where residents could work, relax and play. Two balconies offer outdoor seating to soak-in the breath-taking views. The colour scheme of this resident-only living room has been inspired by the Arabian Sea views visible through the floor-to-ceiling windows. Nature is brought into the interior space in the form of large indigenous plants, as well as in an impressive ceiling installation, comprising horizontal timber beams that run along the entire length. Bronze tubes hang down in clusters like the vines of a tropical forest. The dining room continues several of the design features seen elsewhere, such as geometric veneer panelling, while also providing an impressive social space.



The kitchen is stylishly appointed with quartz countertops, fluted glass, burnished brass cabinets, and pale wood drawers. A study creates a sophisticated home office with its burnt sienna and navy blue palette. The apartment's layout offers a master bedroom, a "deputy master bedroom" and a third double bedroom, each with its own en-suite bathroom. The bedrooms are chic yet homely and differ slightly in size, colour palette and accessories, but each room is finely appointed to ensure that residents enjoy the highest level of comfort.



Other than the comforts they would enjoy at home, the amenities offered at the Piramal Aranya is bound to keep residents happy. The indoor amenities include a gymnasium and spa; table tennis, squash and badminton courts; a mini movie theatre, library, and cafe. The outdoor amenities constitutes a heated swimming pool, a kids pool and walking and jogging tracks. **DI**



## Directory

### SET IN NATURE

ARCHITECTS CHINMAY  
LAIWALA, JIGAR ASARAWALA  
AND TARIKA ASARAWALA  
STUDIO NEOGENESIS

+STUDIO0261

A 55, River Palace, Nanpura, Surat  
395001; Tel: (0261) 2474402;  
Email: studioneogenesis@  
gmail.com

### INTERNATIONAL LINES

### COLLABORATIVE CREATIVITY

GENSLER

2 Harrison Street, Suite 400, San  
Francisco CA 94105; Tel: +1  
415.433.3700; Fax: +1  
415.836.4599; Website: www.  
gensler.com

### 9TO5

### INCLINED TO INTRIGUE

ARCHITECTS BHUMIKA PATEL  
AND CHINTAN PATEL

Limited Edition Design Studio  
5, Chetna, Vallabhnbhai Patel Road,  
Vile Parle (W), Mumbai 400056;  
Mobile: 08976009735

### UNWIND

### SUITE LIFE

ARCHITECT HIRAL JOBALIA  
HIRAL JOBALIA STUDIO

A 110, Antop Hill Warehouse,  
Near Barkat Ali Naka, Wadala (E),  
Mumbai 400037; Tel: (022)  
24171152; Email: hiraljobalia@  
gmail.com; Website: www.  
hiraljobalia.com

### SPACE & SPICE

### GOTHIC GRUNGE

ARCHITECT RUSHABH PAREKH  
RPDS

Ratnajyot Industrial Estate, IRA  
Lane, Vile Parle (W), Mumbai  
400056; Tel: (022) 26712297;  
Email: info@rpds.in; Website:  
www.rpds.in

### THE URBAN FOUNDRY

B 1, Amerchand Mansion, 16  
Madame Cama Road, Colaba,  
Mumbai 400005; Tel:  
(022) 61054617

### SNAPSHOTS

### ROYAL RADIANCE

INTERIOR DESIGNER

### SHANTANU GARG

SHANTANU GARG DESIGN

22 B, Vaishali Retreat Arts, Veer  
Vihar Colony, Queens Road,  
Jaipur 302021; Mobile:  
98291 25055; Website: www.  
shantanugargdesign.com  
STYLE 'N' SCISSORS  
Plot No 36, 37, Madho Singh  
Road, Jaipur 302016;  
Mobile: 9982788999;  
Website: www.stylen  
scissors.com

### THE ARANYA LIFE

PIRAMAL ARANYA

PRL DEVELOPERS PVT LTD

8th Floor, Piramal Tower,  
Peninsula Corporate Park,  
Ganpatrao Kadam Marg,  
Lower Parel, Mumbai 400013;  
Tel: (022) 62166216; Website:  
www.piramalaranya.com

### GALLERY

### BAJAJ ELECTRICALS LTD

Rustomjee Aspire, 6th Floor,  
Bhanu Shankar Yagnik Marg,  
Sion (E), Mumbai 400022;  
Tel: (022) 24064000;  
Website: www.bajaj  
electricals.com

### DURAVIT INDIA PVT LTD

61, Titanium, Near Prahlad  
nagar Auda Garden,  
Prahladnagar, Ahmedabad  
380015; Tel: (079) 66112338;  
Fax: (079) 66112316; Website:  
www.duravit.in

### ENCRAFT INDIA PVT LTD

70, Okhla Industrial Estate,



Phase III, New Delhi 110020;

Tel: (011) 40922210;

Email: info@encraft.in;

Website: www.encraft.in

### EUREKA FORBES

B1/B2, 701, 7th Floor, Marathon  
Innova Marathon NextGen, Off  
Ganpatrao Kadam Marg Lower  
Parel, Mumbai 400013; Tel:  
(022) 30449700; Website:  
www.eurekaforbes.com

### GODREJ APPLIANCES

Godrej & Boyce Manufacturing  
Company Ltd; Pirojshanagar,  
Vikhroli, Mumbai 400079;  
Tel: (022) 6796 5656; Email:  
smartcare@godrej.  
com; Website: www.  
godrejappliances.com

### GROUPE SEB INDIA

A 25, Mohan Cooperative  
Industrial Suites, Mathura  
Road, New Delhi 110044  
Email: customercare.india@  
tefal.com; Website: www.  
tefal.in

### KAITERRA

6A Club Drive, Ghitorni,  
New Delhi 110030; Mobile:  
9818796080; Website: www.  
kaiterra.com

### VITRA INDIA

1st Floor, Premises No B,  
102, Durolite House New Link  
Road, Andheri (W) Mumbai  
400053; Tel: (022)  
67085000; Website: www.  
vitra-india.com

